

DATA SHEET

Flexural Test Devices for Mortar Beams



65-L0019/B

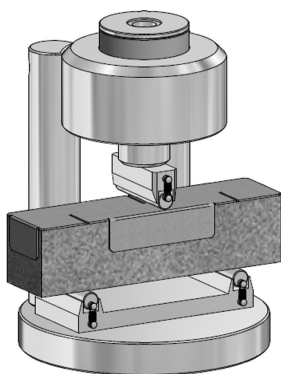
General description

Robust frame fitted with an upper bearer that moves vertically supported by springs. One of the two lower bearers can tilt horizontally and the distance between the two bearers is 100 mm for the EN version 65-L0019/B and 119 mm for the ASTM version 65-L0019/C. Apart from that, the two models are identical.

- Total height is 188 mm
- Weight approx.: 8 kg

Standards

- EN 196-1
- ASTM C348



65-L0019/B1 fitted on cement prism 40x40x160 mm