

## DATA SHEET

# CBR Equipment, ASTM/AASHTO Version



ASTM/AASHTOCBR mould set (partial)

## General description

This method is used for the laboratory evaluation of subgrade and subbase coarse materials in road construction. To perform this type of test, we propose moulds with various accessories listed in the table below and manual compaction rammers. Different models are available conforming to the various relevant specifications.

In this section moulds, suitable accessories and rammers conforming to ASTM, AASHTO, UNE and UNI are shown.

An alternative (and preferable) method of compacting is to use an automatic compactor. For more information, see link to other products below.

The CBR penetration test can be performed with a number of loading presses, some of them specifically designed for CBR tests, and others with multiple applications (Universal models), at different levels of sophistication. See link to other products below.

## Standards

- AASHTO T193
- ASTM D1883
- UNI 10009
- UNE 103-502

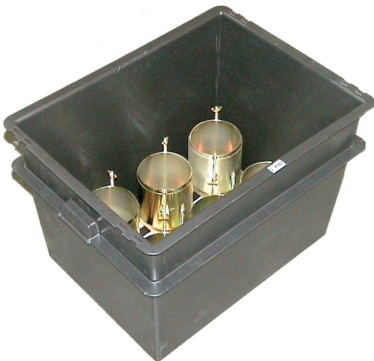
## DATA SHEET



Compaction rammer model 33-T0076



Gauge tripod 34-T0093 with dial gauge 82-D1255 and swell plate 34-T0092



Soaking tank 34-T0100/B with CBR moulds

## DATA SHEET



Universal extruder model 16-T0080 with 6" mould



Sliding weight rammer model 33-T0096

## Products

### 34-T0090/A

CBR mould with collar and perf. base plate 6" (152.4 mm) dia., conforming to ASTM and AASHTO standards

### 34-T0090/A1

Split CBR mould with collar and perf. base plate 6"(152.4 mm) dia., conforming to ASTM and AASHTO standards

## Accessories and consumables

### 33-T0076

Modified compaction rammer ASTM

### 34-T0090/3

Filter screen

### 34-T0091

Spacer disc

### 34-T0091/1

Spacer disc, UNE, NF.

### 34-T0092

## DATA SHEET

---

Perforated plate with adjustable stem (swell plate)

**34-T0093**

Dial gauge tripod

**34-T0094**

Annular surcharge weight 2.27 kg

**34-T0095**

Slotted surcharge weight 2.27 kg

**34-T0096**

Sliding weight CBR rammer

**34-T0097/A**

Solid CBR base for 34-T0090/A and 34-T0090/A1 moulds, conforming to ASTM and AASHTO standards

**34-T0098**

Cutting edge

**34-T0099**

Straight edge

**34-T0100/B**

Large soaking tank, external dim. 800x600x550 mm

**86-D1800**

Whatman paper (or equivalent). No 1 x 150 mm dia medium grade. (pack of 100)