

DATA SHEET

Rolling Thin Film Ovens (RTFOT)



RTFOT Rolling Thin Film Oven with 4.5" touchscreen display

General description

These ovens are used for measuring the effect of heat and air on a moving film of semi-solid bituminous materials. The internal chamber is made from stainless steel, insulated with fiberglass or similar, with an external frame made from engine-turned stainless steel and a door with a centrally located window.

Special attention has been given to the safety features which conform to CE requirements.

The **Rolling thin film ovens (RTFOT)** can be used as part of your **Superpave performance based testing** program.

The oven is supplied complete with flow meter, ASTM 13C thermometer and 8 heat resistant glass containers (64 mm high x 140 mm diameter).

The oven must be connected to a compressed air source supplying 2 bar minimum pressure. If not available in the laboratory we recommend to order Diphgram pump (see accessories).

Version available:

- **81-PV1612** conforming to ASTM/AASHTO standards
- **81-PV1622** conforming to EN standard

Main features

- Touch-screen display with 4.5" color control panel, including timer function, visual warnings and digital air flow regulator
- Full conformity to temperature specifications (time to reach target temperature after switch on, target temperature adjustment after samples insertion) from the Standards
- Carousel rotation with closed-loop controlled speed
- Safety features: Automatic over-temperature switch, door switch, pilot lamp and alarm for door open with fan still running; magnetothermic switch
- High quality stainless steel structure, internal and external
- Door with double-glazed window
- Door locking system allowing easy opening also with busy hands

DATA SHEET

Standards

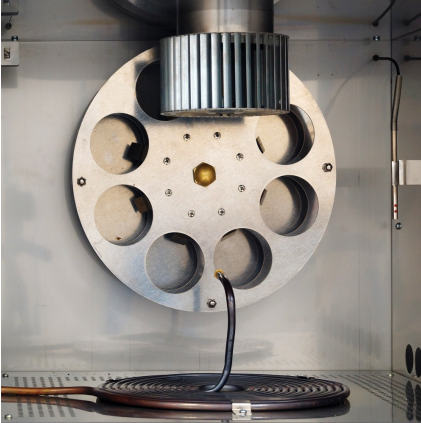
- ASTM D2872
- AASHTO T240
- EN 12607-1

Specifications

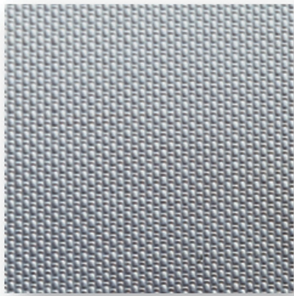
Power: 3000 W

External dimensions: 750 x 750 x 900 mm (w x d x h)

Weight: approx. 110 kg

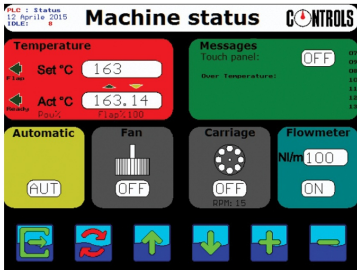


Detail of the RTFOT test chamber



Detail of external stainless lining "linen patterned" resistant to scratches and shocks

DATA SHEET



Detail of the 4.5" touchscreen display



Door locking system allowing easy opening also with busy hands

Products

81-PV1612

RFTOT Asphalt oven for rolling thin film oven test. ASTM version, complete with ASTM 13C thermometers and 8 glass container. 230V/50Hz/1ph

81-PV1613

RFTOT Asphalt oven for rolling thin film oven test. ASTM version, complete with ASTM 13C thermometers and 8 glass container. 220V/60Hz/1ph

81-PV1614

RFTOT Asphalt oven for rolling thin film oven test. ASTM version, complete with ASTM 13C thermometers and 8 glass container. 110V/60Hz/1ph

81-PV1622

RFTOT Asphalt oven for rolling thin film oven test. EN version, complete with ASTM 13C thermometers and 8 glass container. 230V/50Hz/1ph

Accessories and consumables

DATA SHEET

82-PV0160/10MF

Loss on heat thermometer IP 47C ASTM 13C, range +155 to +170°C, mercury free with alternative liquid

81-PV0161/10

Spare glass container

81-PV0161/12

Diaphragm pump for 81-PV16XX RTOFT oven 110-230V/50-60Hz/1Ph

81-PV0161/13

Scraper for RTFOT bottle

81-PV0161/14

Metal rack for holding/cooling RTFOT bottles

81-PV0161/15

RTFOT bottle tong