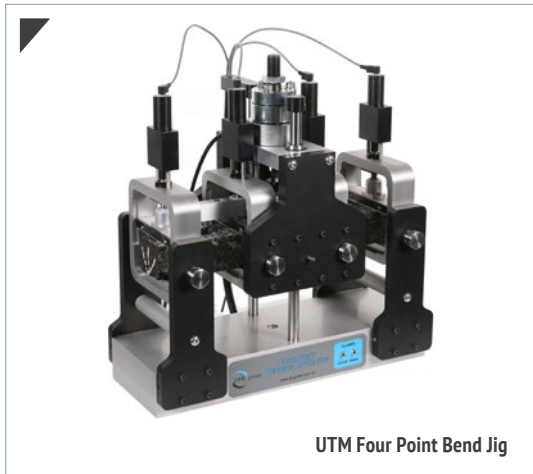


# Four Point Bend Jig

## Accessories

### ADVANCED PAVEMENTS TESTING SYSTEMS



IPC Global's Four Point Bend Jig has been designed to subject an asphalt specimen to four point bending with backlash free rotation and horizontal translation of all load and reaction points.

Designed for easy test set-up, the Four Point Bend Jig is the perfect accessory for your IPC Global UTM-30 or UTM-15P.

#### Features

- Innovative "floating straight-edge" on specimen transducer eliminates errors
- Backlash free rotation and translation on all load and reaction points
- Sinusoidal or haversine controlled strain or controlled stress loading
- Constant force motorized specimen clamping
- Non-linear regression data fitting ensures reliable determination of phase and modulus
- Can be used with existing UTM, AsphaltQube or Asphalt Standards Tester systems
- Cost effective solution for high volume testing.

## Specifications

#### Test Standards

- AASHTO T321 – Fatigue (Formerly TP8)
- AG:PT/T274-15 – Fatigue (Formerly AG:PT/T233, AST 03:2000)
- ASTM D7460 – Flexural Fatigue
- EN 12697-24D – Resistance to Fatigue
- EN 12697-26B – Stiffness

#### Specimen Dimensions

<b>Loading Frequency</b>	up to 70Hz*
<b>Load Capacity</b>	up to 10kN dynamic
<b>Specimen Size</b>	70max. x 80max. x 380min. mm (HxWxL)
<b>Yoke Alignment Tool for Specimens</b>	50 x 50 x 355.5mm (H x W x Outer span centers)
	70 x 70 x 420mm (H x W x Outer span centers)

\* Frequency dependent on testing system and test parameters

#### Dimensions and Weight

<b>Size</b>	455x 460x230mm (HxWxD)
<b>Weight</b>	35kg

#### Ordering Information

- PV70400 – UTM-30 Four Point Bend Jig c/w Yoke Alignment Tool for 355.5 x 50 x 60mm
  - PV70402 – UTM-16P Four Point Bend Jig c/w Yoke Alignment Tool for 355.5 x 50 x 60mm
  - PV72101 – AsphaltQube and AST Four Point Bend Jig c/w Yoke Alignment Tool for 355.5 x 50 x 60mm
  - PV70406 – Yoke Alignment Tool for 420 x 70 x 70mm
  - PV70403 – 4PB PVC beam (dummy specimen)
  - PV70404 – 4PB Apparatus reference beam assembly
  - PV70116 – Temperature measurement kit – Low Temp Range (-50°C)
  - UTS018 - EN 4 Point Bend Test for Rectangular Prisms
- Additional accessories may be required to create a working testing system. Please contact us for advice.

## Testing Made Easy

**The specimen is laterally positioned by eye using etched lines as a visual guides.**

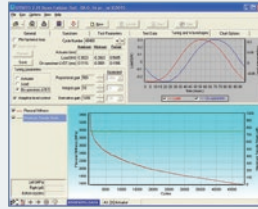
Vertical clamping of the specimen is achieved by servo-motor driven ball screws which are operated continuously during the test to adjust for the compliance of the specimen at the clamping surfaces.

**IPC Global's Four Point Bend Jig** are available in three versions for use with UTM-30, UTM-15P, AsphaltQube and Asphalt Standards Tester. The UTM-15P, AsphaltQube and Asphalt Standards Tester versions do not require a local load cell and uses the UTM load cell for feedback control of load and strain.

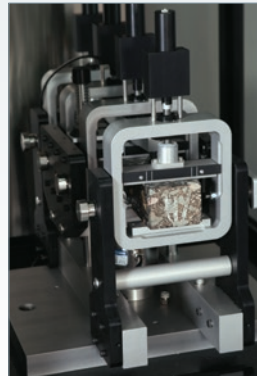


Four Point Bend Jig

## Superior Performance



IPC Global's Four Point Bend Jig is designed to be used with IPC Global's Integrated Multi-Axis Control System (IMACS), which offers leading-edge performance, unparalleled control and the ultimate in flexible data acquisition. The IMACS uses PID closed-loop control and a run time adaptive control algorithm that adjusts the command signal during the running of a test.



AsphaltQube Four Point Bend Jig

IPC Global's purpose designed UTS software draws upon over 25 years of advanced materials testing experience and is known for its simplicity in use, clarity of results and analytical power. UTS allows for real time graphing of results and configurable real time transducer levels screen, as well as customizable test templates to streamline the testing process.

See IMACS and UTS Brochure for more details.

See IMACS and UTS Brochure for more details.

## ► IPC Global Customer Care

**At IPC Global we are proud of our products.**

We are dedicated to supplying high quality, accurate, affordable, easy-to-use systems for Advanced Testing of asphalt, binders and other pavement materials. As a valued customer of IPC Global you will receive continuous, expert support and advice for your instrument. Furthermore, we offer full installation and training in the correct operation of your IPC Global equipment. For support from our expert Customer Care Team, contact your local IPC Global-Controls office/distributor or email [ipcglobalsupport@controls-group.com](mailto:ipcglobalsupport@controls-group.com).

Visit our website for more information [www.controls-group.com/ipcglobal](http://www.controls-group.com/ipcglobal).



## ► Contact Us

### IPC Global

E [ipcglobalsales@controls-group.com](mailto:ipcglobalsales@controls-group.com) [www.controls-group.com/ipcglobal](http://www.controls-group.com/ipcglobal)

### Controls Group USA

2521 Technology Drive, Suite 203, Elgin, IL 60124, USA T +1 847 551 5775 E [info@controls-usa.com](mailto:info@controls-usa.com) [www.controls-usa.com](http://www.controls-usa.com)

### Controls Group

T +39 02 92184 1

F +39 02 92103 333

E [sales@controls-group.com](mailto:sales@controls-group.com)

[www.controls-group.com](http://www.controls-group.com)

### France

[www.controls.fr](http://www.controls.fr)

### Italy

[www.controlsitalia.it](http://www.controlsitalia.it)

### Iraq

[www.controlsmiddleeast.com](http://www.controlsmiddleeast.com)

### Mexico

[www.controls.com.mx](http://www.controls.com.mx)

### Poland

[www.controls.pl](http://www.controls.pl)

### UK

[www.controlstesting.co.uk](http://www.controlstesting.co.uk)

### Spain

[www.controls.es](http://www.controls.es)

[www.controls-group.com/ipcglobal](http://www.controls-group.com/ipcglobal)